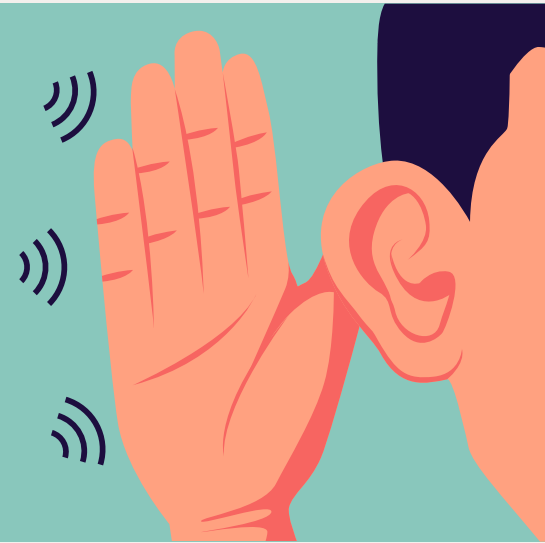


# WHAT IS HEARING LOSS?

When your child does not respond to sound at the normal level of hearing, he/she is experiencing a hearing loss.

## HOW IS HEARING LOSS MEASURED?



### **Borderline (16-25dB)**

The child may have difficulty hearing some soft sounds.

### **Mild hearing loss (26-40dB)**

The child may have difficulty hearing faint or distant speech.

### **Moderate hearing loss (41-55dB)**

The child may have limited vocabulary and delayed speech.

### **Moderate to Severe (56-70dB)**

The child may have difficulty using language and understanding speech.

### **Sever hearing loss (71-90dB)**

The child is unable to develop speech and language as expected.

### **Deaf or Profound (91-120+dB)**

The child relies on vision rather than hearing as primary avenue for communication.